



®

Altos Engineers Pvt. Ltd.

Technology For Life



**IMPROVING LIVES**  
With Innovation

World Class **LED** Surgical Lights



# About Us

We, 'Altos' are engaged in the Manufacture, Supplying & Export of a wide range of Surgical & Medical Equipments. These are manufactured using high-quality materials & find usage in Hospitals, Clinics, Health Care Centres & Medical Establishments.

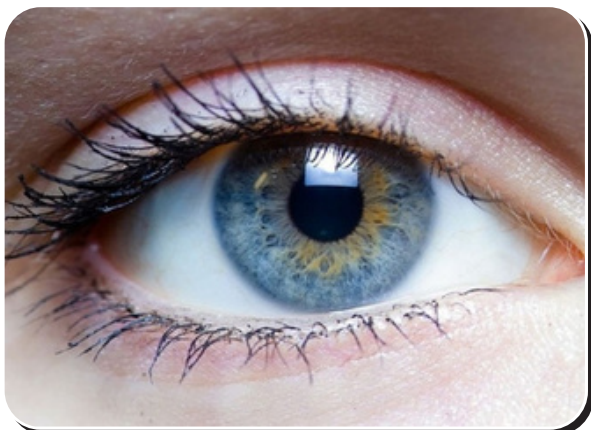
We make use of state-of-the-art technology & latest machines to manufacture these products which are handled by skilled professionals, who take care of the entire production process and make constant, efforts to manufacture these high-quality products.

Furthermore, we own a well-developed warehouse that is equipped with all the facilities, where the product range is stored. Owing to the superior quality & cost effectiveness of our products, we have earned immense market appreciation.



## Core Values

We believe in treating our Customers with utmost respect and faith. We grow through creativity, invention and Innovation We Integrate Honesty, Integrity and Business ethics into all aspects of our business.



## Our Vision

We provide Quality Base Product For Safety of Doctors Eyes We use German Based Electronic Component & medical Grade LED



### Special Features

High quality sterilizable handle, with protective fire resistant ESG safety glass for scratch proof, fast disinfection process, protects UV and IR rays and improve light penetration. with 360 Degree Moment, ENDO Mode and with Special European Design For Ventilation of Heat.

## Technical Data

Model No.- Altos LED 600+600

Dome Size-600mm

Intensity Lux-160000+160000+- 10% Depth

Illumination-10-15 cm

Spot Diameter-125 - 200mm

Colour Temp.-3500k-4800k

Focusing-Adjustable

Power Supply-220v/50HZ AC

Colour Rendering Index-95RA

Power Consumption-50+50Watt

Led Average Life-50000Hrs

Intensity Control-30~100

Battery Backup-Optional

### Altos LED 600+600

European Design Dome



E

Endo Mode

E

Natural Light

## Altos LED 600

### Special Features

High quality sterilizable handle, with protective fire resistant ESG safety glass for scratch proof, fast disinfection process, protects UV and IR rays and improve light penetration. with 360 Degree Moment, ENDO Mode and with Special European Design For Ventilation of Heat.



## Technical Data

Model No.- Altos LED 600  
 Dome Size-600mm  
 Intensity Lux-160000+\_ 10% Depth  
 Illumination-10-15 cm  
 Spot Diameter-125 - 200mm Colour  
 Temp.-3500k-4800k Focusing-  
 Adjustable  
 Power Supply-220v/50HZ AC Colour  
 Rendering Index-95RA  
 Power Consumption-50Watt  
 Led Average Life-50000Hrs Intensity  
 Control-30~100  
 Battery Backup-Optional



## Altos LED 600

### Technical Data

Model No.- Altos LED 600  
 Dome Size-600mm  
 Intensity Lux-160000+\_ 10% Depth  
 Illumination-10-15 cm  
 Spot Diameter-125 - 200mm Colour  
 Temp.-3500k-4800k  
 Focusing-Adjustable  
 Power Supply-220v/50HZ AC Colour  
 Rendering Index-95RA  
 Power Consumption-50Watt  
 Led Average Life-50000Hrs  
 Intensity Control-30~100  
 Battery Backup-Optional

### Special Features

High quality sterilizable handle, with protective fire resistant ESG safety glass for scratch proof, fast disinfection process, protects UV and IR rays and improve light penetration. with ENDO Mode and with Special European Design For Ventilation of Heat.

## Technical Data

Model No.-Altos LED 550+550  
Dome Size-500mm  
Intensity Lux-160000+160000+\_ 10% Depth  
Illumination-10-15 cm  
Spot Diameter-125 - 200mm  
Colour Temp.-3500k-4800k  
Focusing-Adjustable  
Power Supply-220v/50HZ AC  
Colour Rendering Index-95RA  
Power Consumption-45+45Watt  
Led Average Life-50000Hrs  
Intensity Control-30~100  
Battery Backup-Optional

### Altos LED 550+550

European Design Dome



**E** Endo Mode

**E** Natural Light

## Altos LED 550

### Special Features

High quality sterilizable handle, with protective fire resistant ESG safety glass for scratch proof, fast disinfection process, protects UV and IR rays and improve light penetration. with ENDO Mode and with Special European Design For Ventilation of Heat.



## Technical Data

Model No.-Altos LED 550  
 Dome Size-500mm  
 Intensity Lux-160000+\_ 10% Depth  
 Illumination-10-15 cm  
 Spot Diameter-125 - 200mm Colour  
 Temp.-3500k-4800k Focusing-  
 Adjustable  
 Power Supply-220v/50HZ AC Colour  
 Rendering Index-95RA  
 Power Consumption-45Watt  
 Led Average Life-50000Hrs Intensity  
 Control-30~100  
 Battery Backup-Optional

## Altos LED 550

### Technical Data

Model No.-Altos LED 550 Dome Size-  
 500mm  
 Intensity Lux-160000+\_ 10% Depth  
 Illumination-10-15 cm  
 Spot Diameter-125 - 200mm Colour  
 Temp.-3500k-4800k Focusing-Adjustable  
 Power Supply-220v/50HZ AC Colour  
 Rendering Index-95RA  
 Power Consumption-45Watt  
 Led Average Life-50000Hrs Intensity  
 Control-30~100  
 Battery Backup-Optional





### Special Features

High quality sterilizable handle, with protective fire resistant ESG safety glass for scratch proof, fast disinfection process, protects UV and IR rays and improve light penetration. with ENDO Mode and with Special European Design For Ventilation of Heat.

## Technical Data

- Model No.-Altos LED 501+501
- Dome Size-500mm
- Intensity Lux-140000+140000+\_ 10%
- Depth Illumination-10-15 cm
- Spot Diameter-125 - 150mm
- Colour Temp.-3500k-4800k Focusing- Manual
- Power Supply-220v/50HZ AC
- Colour Rendering Index-95RA
- Power Consumption-40+40Watt
- Led Average Life-50000Hrs
- Intensity Control-30~100
- Battery Backup-Optional

### Altos LED 501+501

European Design Dome



**E** Endo Mode

**E** Natural Light

## Altos LED 501

### Special Features

High quality sterilizable handle, with protective fire resistant ESG safety glass for scratch proof, fast disinfection process, protects UV and IR rays and improve light penetration. with ENDO Mode and with Special European Design For Ventilation of Heat.



## Technical Data

Model No.- Altos LED 501  
 Dome Size-500mm  
 Intensity Lux-140000+\_ 10% Depth  
 Illumination-10-15 cm  
 Spot Diameter-125 - 150mm Colour  
 Temp.-3500k-4800k Focusing-  
 Manual  
 Power Supply-220v/50HZ AC Colour  
 Rendering Index-95RA  
 Power Consumption-40Watt  
 Led Average Life-50000Hrs Intensity  
 Control-30~100  
 Battery Backup-Optional

## Altos LED 501

### Technical Data

Model No.-Altos LED 501  
 Dome Size-500mm  
 Intensity Lux-140000+\_ 10% Depth  
 Illumination-10-15 cm  
 Spot Diameter-125 - 150mm Colour  
 Temp.-3500k-4800k Focusing-  
 Manual  
 Power Supply-220v/50HZ AC Colour  
 Rendering Index-95RA  
 Power Consumption-40Watt  
 Led Average Life-50000Hrs Intensity  
 Control-30~100  
 Battery Backup-Optional







### Special Features

High quality sterilizable handle, with protective fire resistant ESG safety glass for scratch proof, fast disinfection process, protects UV and IR rays and improve light penetration. with ENDO Mode and with Special European Design For Ventilation of Heat.

## Technical Data

Model No.-Altos LED 500+500 Dome Size-500mm

Intensity Lux-110000+110000+\_ 10%

Depth Illumination-10-15 cm

Spot Diameter-125 - 150mm

Colour Temp.-3500k-4800k

Focusing-Manual

Power Supply-220v/50HZ AC

Colour Rendering Index-95RA

Power Consumption-35+35Watt

Led Average Life-50000Hrs

Intensity Control-30~100

Battery Backup-Optional

## Altos LED 500+500

European Design Dome



**E** Endo Mode

**E** Natural Light



## Altos LED 500

### Special Features

High quality sterilizable handle, with protective fire resistant ESG safety glass for scratch proof, fast disinfection process, protects UV and IR rays and improve light penetration. with ENDO Mode and with Special European Design For Ventilation of Heat.



## Technical Data

Model No.-Altos LED 500  
 Dome Size-500mm  
 Intensity Lux-110000+ \_ 10%  
 Depth Illumination-10-15 cm  
 Spot Diameter-125 - 150mm Colour  
 Temp.-3500k-4800k  
 Focusing-Manual  
 Power Supply-220v/50HZ AC Colour  
 Rendering Index-95RA  
 Power Consumption-35Watt  
 Led Average Life-50000Hrs Intensity  
 Control-30~100  
 Battery Backup-Optional

## Altos LED 500

### Technical Data

Model No.-Altos LED 500  
 Dome Size-500mm  
 Intensity Lux-110000+ \_ 10%  
 Depth Illumination-10-15 cm  
 Spot Diameter-125 - 150mm Colour  
 Temp.-3500k-4800k Focusing-  
 Manual  
 Power Supply-220v/50HZ AC Colour  
 Rendering Index-95RA  
 Power Consumption-35Watt  
 Led Average Life-50000Hrs Intensity  
 Control-30~100  
 Battery Backup-Optional





## Special Features

High quality sterilizable handle, with protective fire resistant ESG safety glass for scratch proof, fast disinfection process, protects UV and IR rays and improve light penetration & with ENDO Mode.

## Technical Data

Model No.-Altos LED Hexa-5+5  
Dome Size-700mm  
Intensity Lux-170000+170000+\_ 10%  
Depth Illumination-10-15 cm  
Spot Diameter-125 - 150mm  
Colour Temp.-3500k-4800k Focusing-  
Adjustable  
Power Supply-220v/50HZ AC  
Colour Rendering Index-95RA  
Power Consumption-60+60Watt  
Led Average Life-50000Hrs  
Intensity Control-30~100  
Battery Backup-Optional



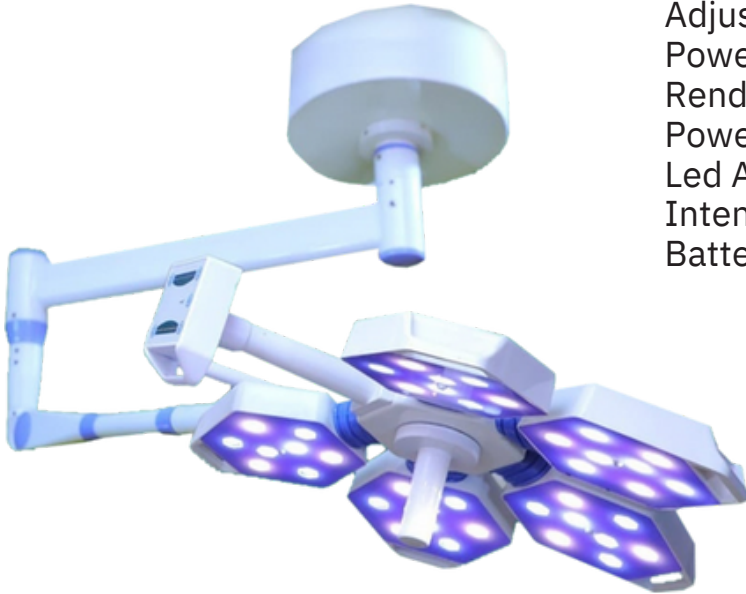
**E** Endo Mode

**E** Natural Light

## Altos LED Hexa-5

### Special Features

High quality sterilizable handle, with protective fire resistant ESG safety glass for scratch proof, fast disinfection process, protects UV and IR rays and improve light penetration & with ENDO Mode.



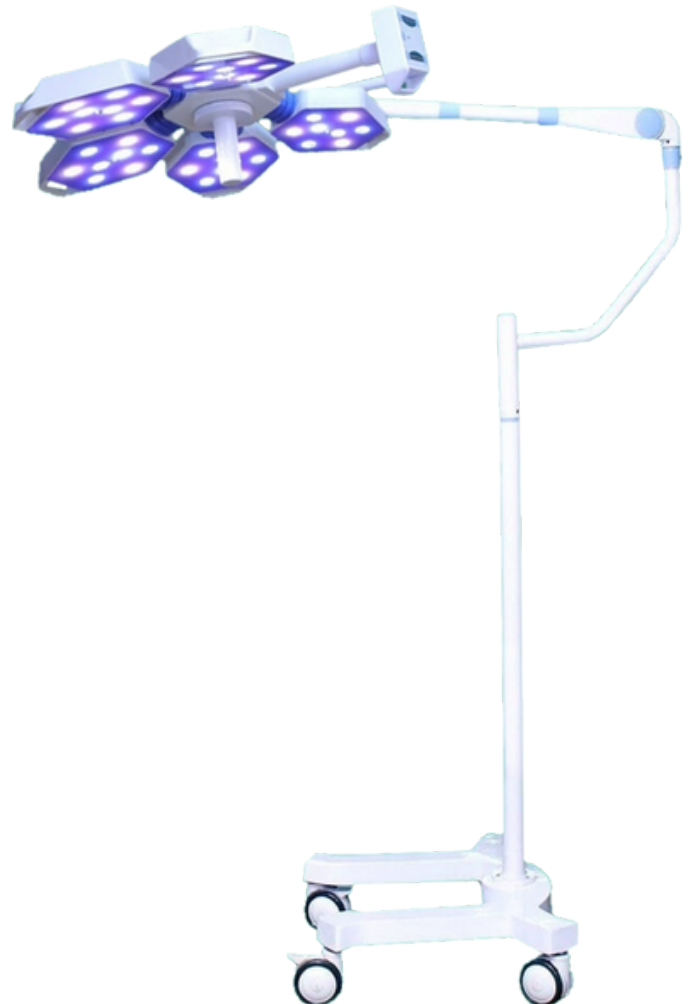
## Technical Data

Model No.-Altos LED Hexa-5  
 Dome Size-500mm  
 Intensity Lux-170000+<sub>-10%</sub>  
 Depth Illumination-10-15 cm  
 Spot Diameter-125 - 150mm Colour  
 Temp.-3500k-4800k Focusing-  
 Adjustable  
 Power Supply-220v/50HZ AC Colour  
 Rendering Index-95RA  
 Power Consumption-60Watt  
 Led Average Life-50000Hrs  
 Intensity Control-30~100  
 Battery Backup-Optional

## Altos LED Hexa-5

### Technical Data

Model No.-Altos LED Hexa-5  
 Dome Size-700mm  
 Intensity Lux-170000+<sub>-10%</sub>  
 Depth Illumination-10-15 cm  
 Spot Diameter-125 - 150mm  
 Colour Temp.-3500k-4800k  
 Focusing-Adjustable  
 Power Supply-220v/50HZ AC  
 Colour Rendering Index-95RA  
 Power Consumption-60Watt  
 Led Average Life-50000Hrs  
 Intensity Control-30~100  
 Battery Backup-Optional





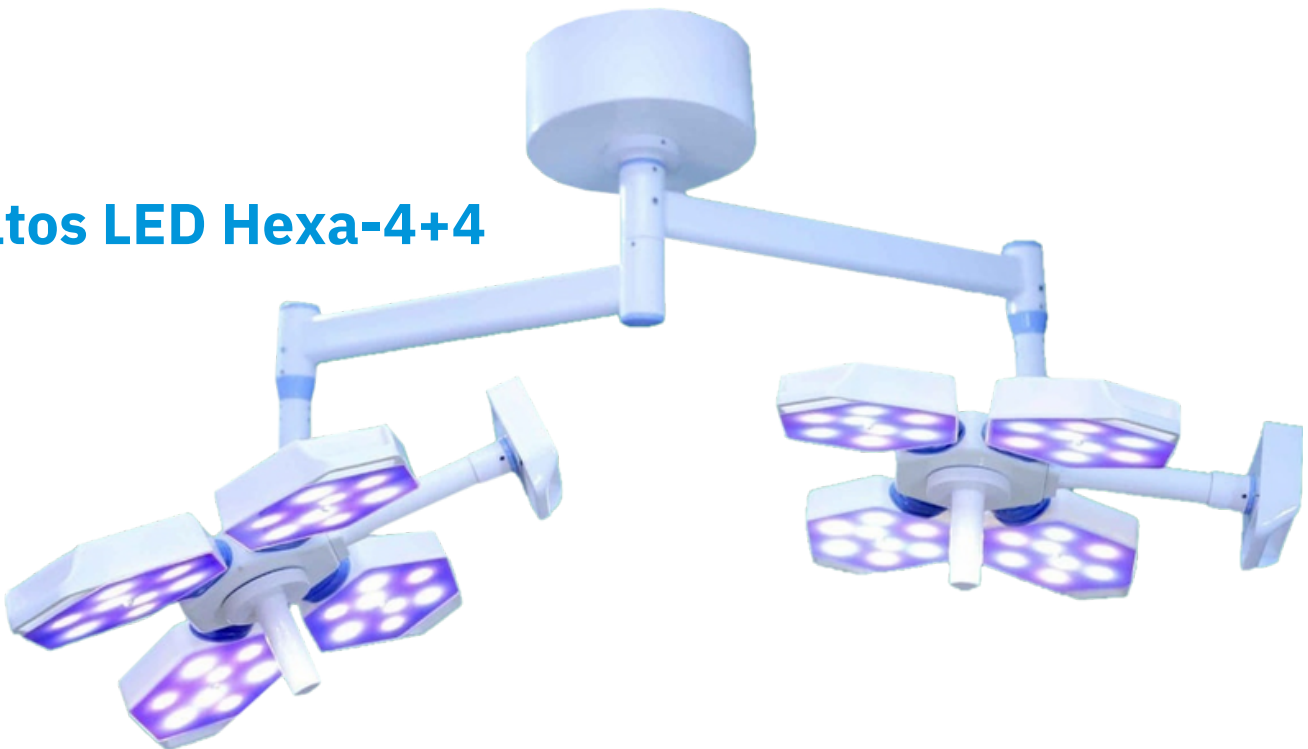
### Special Features

High quality sterilizable handle, with protective fire resistant ESG safety glass for scratch proof, fast disinfection process, protects UV and IR rays and improve light penetration & with ENDO Mode.

## Technical Data

- Model No.-Altos LED Hexa-4+4
- Dome Size-700mm
- Intensity Lux-150000+150000+\_ 10%
- Depth Illumination-10-15 cm
- Spot Diameter-125 - 150mm
- Colour Temp.-3500k-4800k Focusing-Adjustable
- Power Supply-220v/50HZ AC
- Colour Rendering Index-95RA
- Power Consumption-50+50Watt
- Led Average Life-50000Hrs
- Intensity Control-30~100
- Battery Backup-Optional

### Altos LED Hexa-4+4



**E** Endo Mode

**E** Natural Light



## Altos LED Hexa-4

### Special Features

High quality sterilizable handle, with protective fire resistant ESG safety glass for scratch proof, fast disinfection process, protects UV and IR rays and improve light penetration & with ENDO Mode.



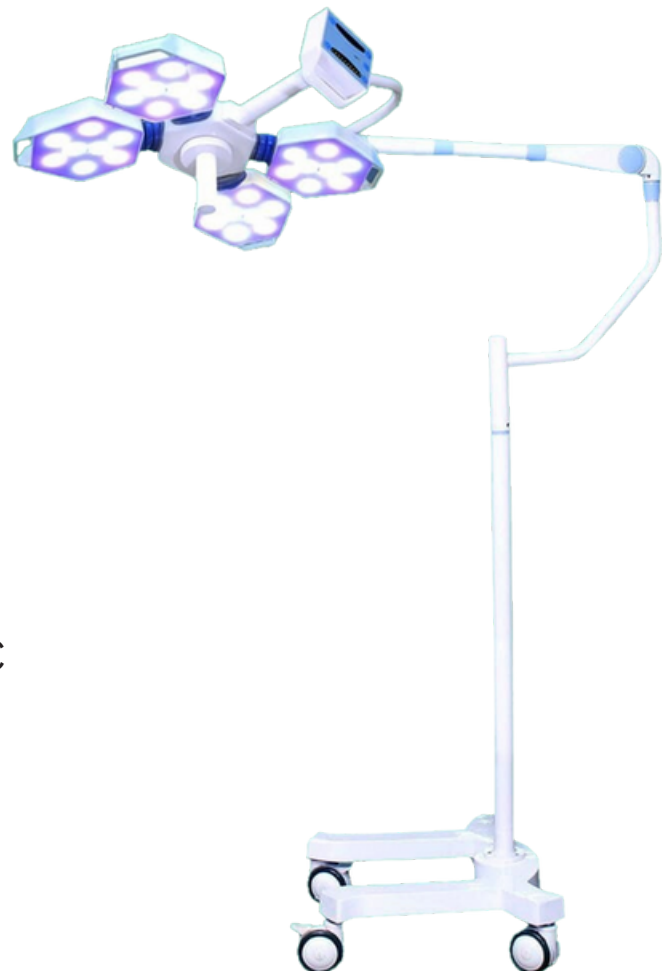
## Technical Data

Model No.-Altos LED Hexa-4  
 Dome Size-700mm  
 Intensity Lux-150000+<sub>-10%</sub>  
 Depth Illumination-10-15 cm  
 Spot Diameter-125 - 150mm Colour  
 Temp.-3500k-4800k Focusing-  
 Adjustable  
 Power Supply-220v/50HZ AC Colour  
 Rendering Index-95RA  
 Power Consumption-50Watt  
 Led Average Life-50000Hrs  
 Intensity Control-30~100  
 Battery Backup-Optional

## Altos LED Hexa-4

### Technical Data

Model No.-Altos LED Hexa-4  
 Dome Size-700mm  
 Intensity Lux-150000+<sub>-10%</sub>  
 Depth Illumination-10-15 cm  
 Spot Diameter-125 - 150mm  
 Colour Temp.-3500k-4800k  
 Focusing-Adjustable  
 Power Supply-220v/50HZ AC  
 Colour Rendering Index-95RA  
 Power Consumption-50Watt  
 Led Average Life-50000Hrs  
 Intensity Control-30~100  
 Battery Backup-Optional



### Special Features

High quality sterilizable handle, with protective fire resistant ESG safety glass for scratch proof, fast disinfection process, protects UV and IR rays and improve light penetration & with ENDO Mode.

## Technical Data

Model No.-Altos LED Hexa-3+3 Dome Size-600mm  
Intensity Lux-120000+120000+\_ 10% Depth  
Illumination-10-15 cm  
Spot Diameter-125 - 150mm  
Colour Temp.-3500k-4800k Focusing-Adjustable  
Power Supply-220v/50HZ AC  
Colour Rendering Index-95RA  
Power Consumption-35+35Watt  
Led Average Life-50000Hrs  
Intensity Control-30~100  
Battery Backup-Optional

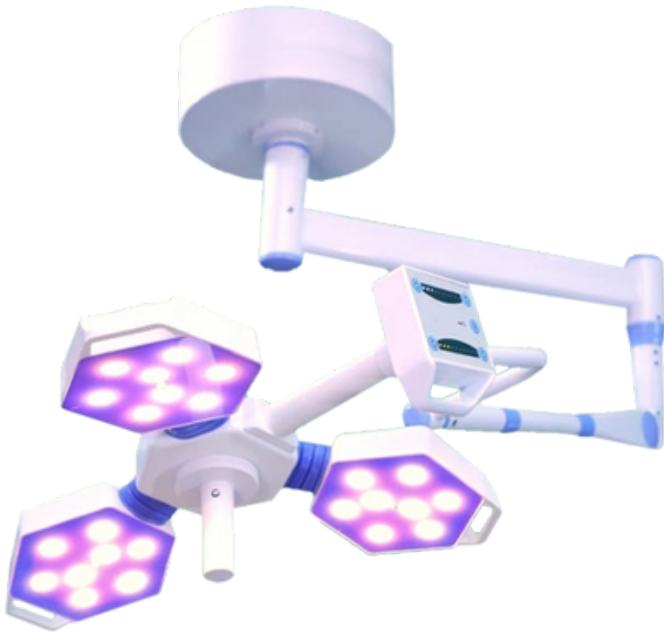




## Altos LED Hexa-3

### Special Features

High quality sterilizable handle, with protective fire resistant ESG safety glass for scratch proof, fast disinfection process, protects UV and IR rays and improve light penetration & with ENDO Mode.



## Altos LED Hexa-3

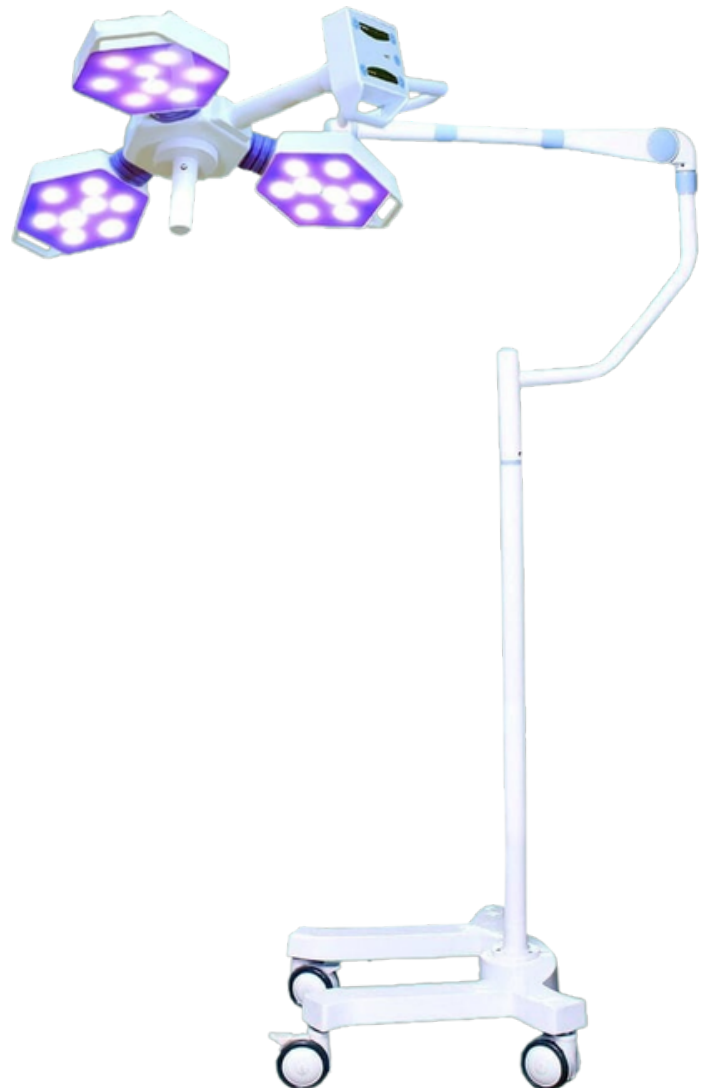
### Technical Data

Model No.-Altos LED Hexa-3  
 Dome Size-600mm  
 Intensity Lux-120000+<sub>-10%</sub>  
 Depth Illumination-10-15 cm  
 Spot Diameter-125 - 150mm  
 Colour Temp.-3500k-4800k  
 Focusing-Adjustable  
 Power Supply-220v/50HZ  
 Colour Rendering Index-95RA  
 Power Consumption-35Watt  
 Led Average Life-50000Hrs  
 Intensity Control-30~100  
 Battery Backup-Optional

AC

### Technical Data

Model No.-Altos LED Hexa-3  
 Dome Size-600mm  
 Intensity Lux-120000+<sub>-10%</sub>  
 Depth Illumination-10-15 cm  
 Spot Diameter-125 - 150mm  
 Colour Temp.-3500k-4800k  
 Focusing-Adjustable  
 Power Supply-220v/50HZ AC  
 Colour Rendering Index-95RA  
 Power Consumption-35Watt  
 Led Average Life-50000Hrs  
 Intensity Control-30~100  
 Battery Backup-Optional





## Altos LED Hexa

### Special Features

with protective fire resistant ESG safety glass for scratch proof. and Body is made of high quality fire resistant polymer

### Technical Data

Model No.-Altos LED Hexa Intensity Lux-  
50000+<sub>-10%</sub>  
Spot Diameter-125 - 150mm Colour  
Temp.-4800k Focusing-Manual  
Power Supply-220v/50HZ AC Colour  
Rendering Index-95RA  
Power Consumption-10Watt  
Led Average Life-50000Hrs  
Intensity Control-30~100  
Battery Backup-Optional



**Examination light**

Serving different industrial segments with our world-class quality products and services.

Hospital Industry



Construction Industry



Cleanroom Industry



Facade Industry



Ev Industry



**Corporate Office:**

Plot No-34, Pace City 1, Sector  
37 Gurugram-122001  
Haryana, India



**Works:**

Plot No.758, Street No. 13, Kadipur Industrial  
Area, Gurugram-122001 Haryana, India



**Sales Office:**

3 Emery Dr Clyde North Vic 3987  
Melbourne Australia



altosindia@gmail.com



+91-8800438222



www.altosengineers.com

