



**Altos Engineers Pvt. Ltd.**  
**Facade Solutions**

# ABOUT COMPANY

ALTOS ENGINEERS PVT. LTD.



## COMPANY PROFILE

ALTOS Engineers began its activities in 2003 and can be introduced as a professionally managed company engaged in manufacturing and supplying different kinds of products for different industries e.g.

- Facade industry
- Hospital industry
- Cleanroom industry
- Electric Vehicle industry
- Building & Construction industry

We are a trustworthy entity, engaged in manufacturing, exporting, and supplying a flawless array of products in different business segments. Altos products are well-known for their features like eye-catching design, long-lasting shine, durability, lightweight, and ease of installation. Our offered product array is manufactured using advanced technology and high-quality raw material as per international norms. We offer our product range in different sizes and designs in order to cater to the specific demands of clients. Altos is a global leading company in manufacturing for different business segments .

# WHY CHOOSE US

## Best teamwork

Altos engineers has a great team of professionals who always with each other to improve products and services of our company.

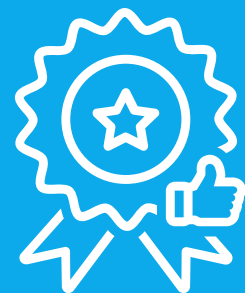


## Efficient

Since we prioritise efficiency throughout every stage of product development, Altos Engineer-designed goods perform exceptionally well.

## Quality Material

Our products are made from superior materials, and we never compromise on quality to save our cost.



## 24/7 Support

Building relationships with our clients is important to us, therefore we're always here to offer a helping hand if they ask for it.



# FACADE SOLUTIONS

---



The facade is not just our Expertise but also our passion

We Altos Engineers Pvt Ltd are committed to providing integrated solutions in Façade technologies, specializing in design and engineering services with an aim to exceed our client's expectations with respect to professional service and quality. We work collaboratively with the project design team to provide solutions that are innovative, effective, and unique to the extent of delivering the client's needs and implementing the essence of architecture and design intent.

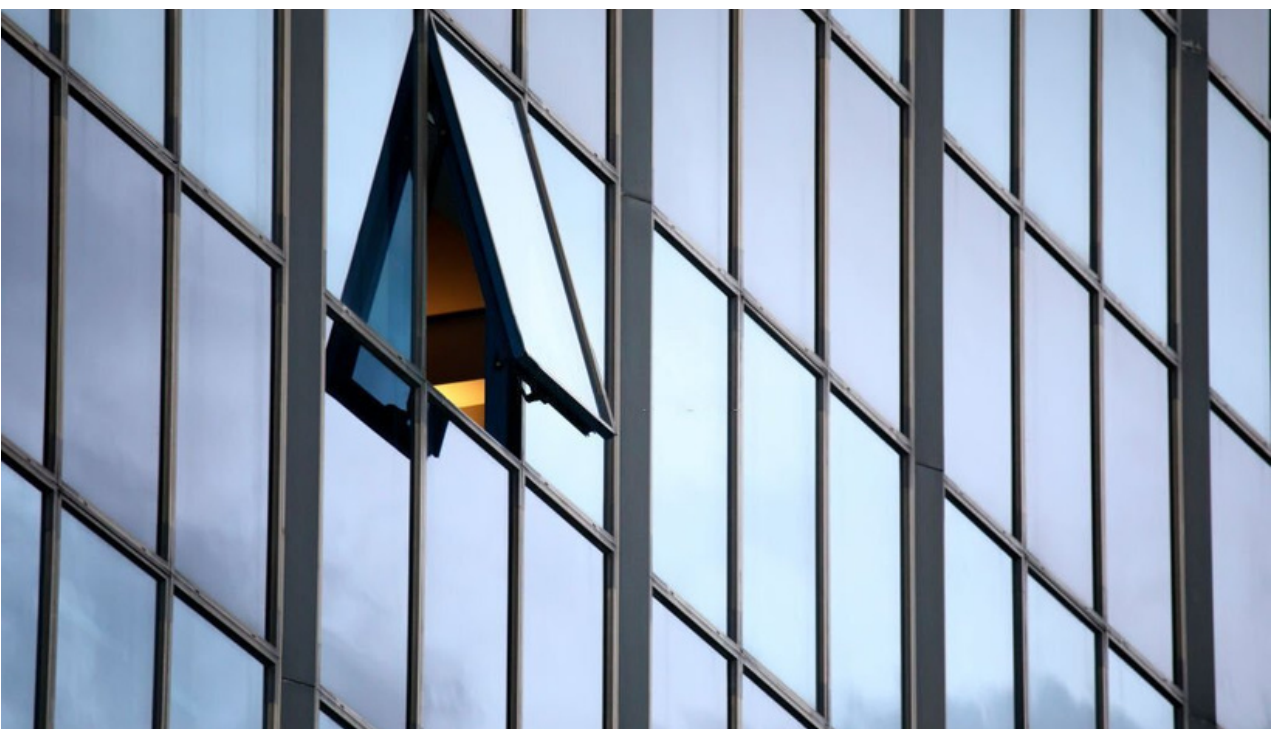


# GLAZING SYSTEMS

---



The term 'glazing' refers to the glass component of a building's façade or internal surfaces. Glazing is referred to the panels that are fixed into aluminum or other types of frames for curtain wall construction. Commonly, there are various techniques that can be used in the construction or placement of glazing panels; glaze panels might be glass or other materials.



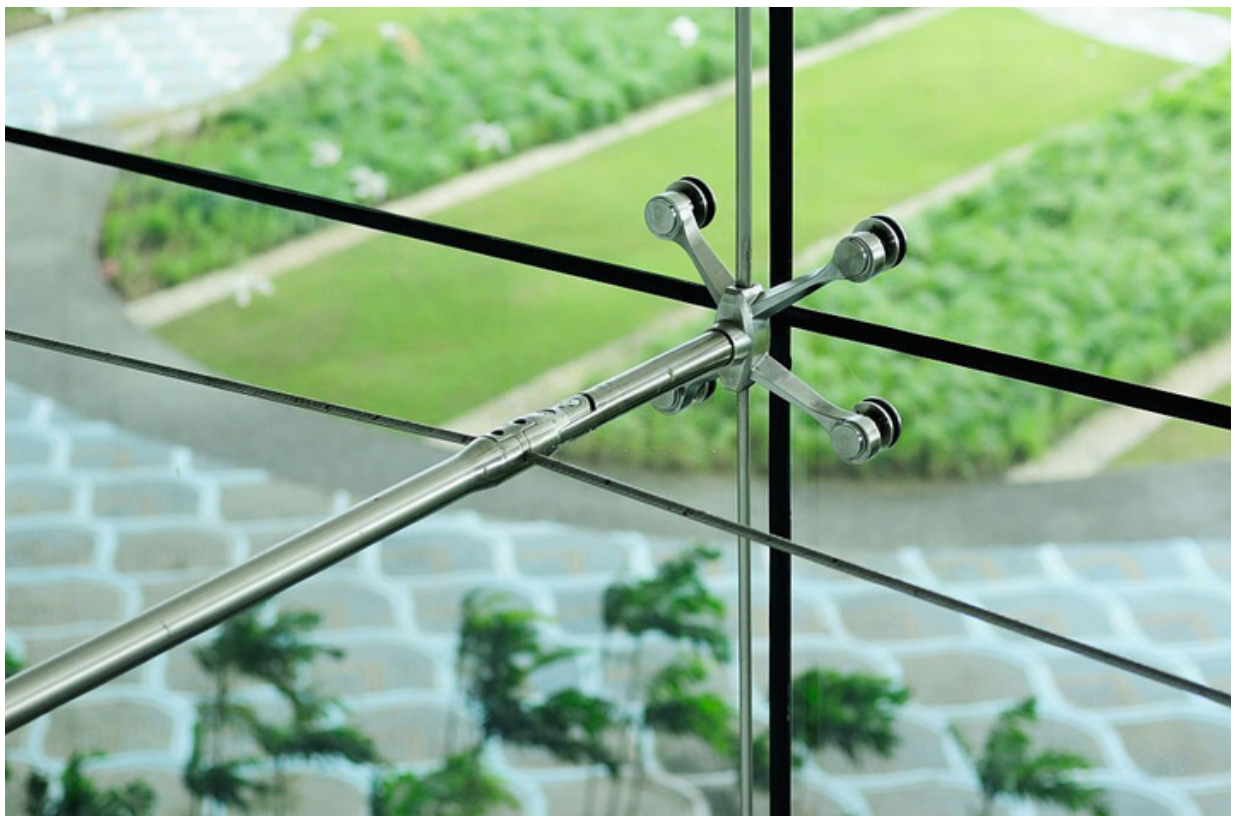


# SPIDER GLAZING

---



Spider Glazing is a part of the frame-less glass system which provide a flush external appearance with uninterrupted views. Spider Glazing curtain walls provide maximum daylight for building interiors, as well as the possibility of placing large transparent glass surfaces as building envelopes



# ACP CLADDING

---



Aluminium Composite Panel (ACP) is a widely-used term, describing panels that consist of a thermoplastic core bonded between two aluminium sheets. ACP is frequently used for external cladding of buildings (building facades). One of the major reasons for choosing ACP cladding is it provides safety against fire accidents. The fire retardant property comes from the mineral core it has in between two ACP Sheets.





# CANOPY

---



Canopy has a design feature that fits all types of building architecture in terms of its entrance architectural type.

The systems designed for users who care about aesthetic design and difference in their buildings, prevent exposure to natural factors, and make a difference in modern architecture with aesthetic applications.

The facade systems have a design feature that fits all types of building architecture in terms of installation. Generally, it is the whole that is formed with spiders, articulated joints, and glazing systems after the mounting of carrier steel or stainless steel to the buildings with or without tension.





# GLASS RAILINGS

---



A railing is a barrier system formed of posts, balusters, and rails. The term railing is sometimes shortened to rail. Clamped Glass Railing is a system where the glass panels are secured with glass clips mounted to posts or occasionally the railing or shoe. This system gives the option to use wood or steel posts and if you want to highlight your hardware (steel or black) this is possible because of the frequency of posts required.



# ALUMINIUM GLASS LOUVERS

---

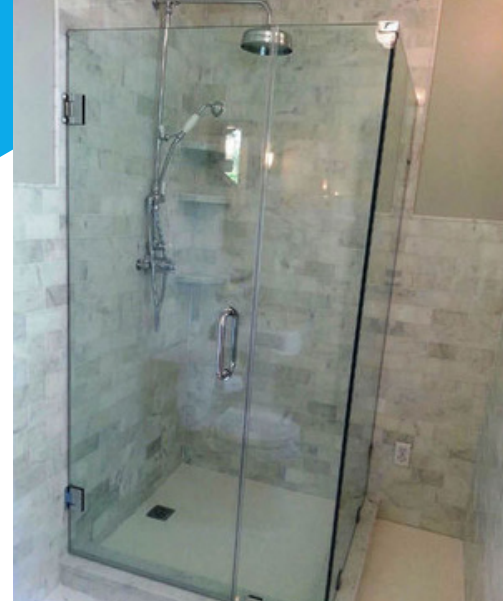


A Louvre is a ventilation product that allows air to pass through it whilst keeping out unwanted elements such as water, dirt and debris. Louver, also spelled Louvre, arrangement of parallel, horizontal blades, slats, laths, slips of glass, wood, or other material designed to regulate airflow or light penetration. Louvers are often used in windows or doors in order to allow air or light in while keeping sunshine or moisture out.



# SHOWER CUBICAL

---



A Louvre is a ventilation product that allows air to pass through it whilst keeping out unwanted elements such as water, dirt and debris. Louver, also spelled Louvre, arrangement of parallel, horizontal blades, slats, laths, strips of glass, wood, or other material designed to regulate airflow or light penetration. Louvers are often used in windows or doors in order to allow air or light in while keeping sunshine or moisture out.





# PROJECTS COMPLETED

---



Astralis Tower,Supernova

- 1.Facade work
- 2.Railing
- 3.ACP Cladding
- 4.Louvers



Supernova ,Nova East &West  
,Noida

- 1.Facade work
- 2.Railing
- 3.ACP Cladding
- 4.Louvers
- 5.Shower Cubical

# PROJECTS COMPLETED

---



## Spectrum Metro, Noida

- 1.Facade work
- 2.Railing
- 3.ACP Cladding
- 4.Louvers
- 5.Structure DOM
- 6.False Ceiling
- 7.Stone Cladding



## IMT, Ghaziabad

- 1.Facade Work
- 2.Metal Structure
- 3.Unitized Glazing
- 4.Louvers



# PROJECTS COMPLETED

---



Paras Quartier ,Gwal Pahari,  
Gurgaon

- 1.Facade Work
- 2.ACP Cladding
- 3.HPL Cladding
- 4.Metal Structure
- 5.Louvers



Paras Dews ,Sec-106

- 1.Facade Work
- 2.Railings
- 3.Glazing
- 4.Door Windows
- 5.Louvers



# PROJECTS COMPLETED

---



M3M,Urbana Premium,  
Gurgaon

- 1.Railing
- 2.Glazing
- 3.Louvers



Central Park ,Flower city,  
Sohna Road Gurgaon

- 1.Railings
- 2.Interior Work
- 3.Aluminium Louvers
- 4.Facade Work
- 5.Glazing

# PROJECTS COMPLETED

---



Tata Elevate, Gurgaon

- 1.Railings
- 2.Louvers
- 3.Door Windows



L&T ,IICC Dwarka, Delhi

- 1.Railings
- 2.Louvers
- 3.Wooden Interior Work
- 4.Glazing



# PROJECTS COMPLETED

---



Paras Square, Gurgaon

- 1.Railings
- 2.Louvers



Paras Trinity, Gurgaon

- 1.Railings
- 2.Louvers



# PROJECTS COMPLETED

---



Paras ONE33, Noida

- 1.Railings
- 2.Louvers
- 3.Facade Work



PMCH, Patna

- 1.HPL Cladding
- 2.Railings
- 3.Metal Structure

# PROJECTS COMPLETED

---



Gravity Mall, Patna

- 1.Railings
- 2.Louvers
- 3.Facade Work
- 4.Glazing
- 5.Canopy



Galaxy Mall, Noida

- 1.Railings
- 2.Louvers
- 3.Facade Work



Serving different industrial segments with our  
world-class quality products and services.

Hospital Industry



Construction Industry



Cleanroom Industry



Facade Industry



Ev Industry



**Corporate Office:**

Plot No-34, Pace City 1, Sector 37  
Gurugram-122001 Haryana, India



**Works:**

Plot No.758, Street No. 13, Kadipur Industrial  
Area, Gurugram-122001 Haryana, India



**Sales Office:**

3 Emery Dr Clyde North Vic 3987  
Melbourne Australia



altosindia@gmail.com



+91-8800438222



www.altosengineers.com

